



**MOST URGENT
BY FAX**

No.PDMA(S)/7(45)/2015/
**GOVERNMENT OF SINDH
REHABILITATION DEPARTMENT
PROVINCIAL DISASTER MANAGEMENT AUTHORITY (SINDH)
PLOT NO. 26-C, MAIN KHAYABAN-E-JAMI,
DHA PHASE-VII, KARACHI.
Phone: 021-99332003-5, Fax: 021-99332700
Karachi, dated: 2nd November, 2019**

CYCLONE MAHA ADVISORY - IV

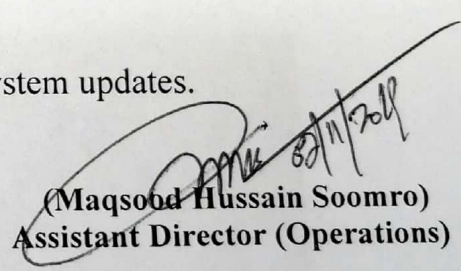
To,

**The Commissioner (s)
Karachi, Hyderabad Divisions**

SUBJECT: CYCLONIC STORM MAHA IN THE SOUTH EAST CENTRAL ARABIAN SEA

I am directed to refer to the subject noted above and to enclose herewith a copy of the Pakistan Meteorological Department Press Release, dated, 2nd November, 2019, informing therein that The Severe Cyclonic Storm "MAHA" over the east central Arabian Sea has moved northwestwards during last 12 hours and located at 0800 PST of 2nd November 2019 around Lat 16.4 N and Long 68.3 E at a distance of about 940 km southeast of Karachi with maximum sustained surface winds of 90-110 kmph. TC-Maha is likely to intensify into a Very Severe Cyclonic Storm (VSCS) during next 12 hours, track further west/northwestwards for next two days and then recurve northeast towards Indian Gujarat. Currently, there is no threat to Pakistan coastal area. However, fishermen are advised to remain careful and avoid into deep sea from Monday.

2. It is therefore requested to please keep abreast of the system updates.


(Maqsood Hussain Soomro)
Assistant Director (Operations)

A Copy for information/necessary action to:

1. The Secretary Fisheries, Govt of Sindh, Karachi.
2. The Secretary Information, Govt. of Sindh, Karachi.
3. The Secretary Local Government Department, Govt. of Sindh, Karachi.
4. The Director (Response), National Disaster Management Authority, Islamabad.
5. The Director (Operations) Pakistan Maritime Security Agency, Karachi.
6. The Head Quarter ComCoast, Karachi.
7. The Head Quarters Engineers, 5 Corps, Karachi.
8. The Chairman DDMA's / Deputy Commissioner (s), Karachi, Badin, Thatta & Sujawal.
9. The Deputy Secretary (Staff) to Chief Minister Sindh, Karachi.
10. The Deputy Secretary (Staff) to Chief Secretary Sindh, Karachi
11. The PS to Secretary Rehabilitation Department, Government of Sindh, Karachi.
12. The PS to Director General, PDMA Sindh, Karachi.

Advisories (6)

Advisory# 6

Issue Date: 2 November, 2019 12:06 PM

Cyclonic Storm MAHA in the South East Central Arabian Sea

Severe Cyclonic Storm MAHA in the Eastcentral Arabian Sea

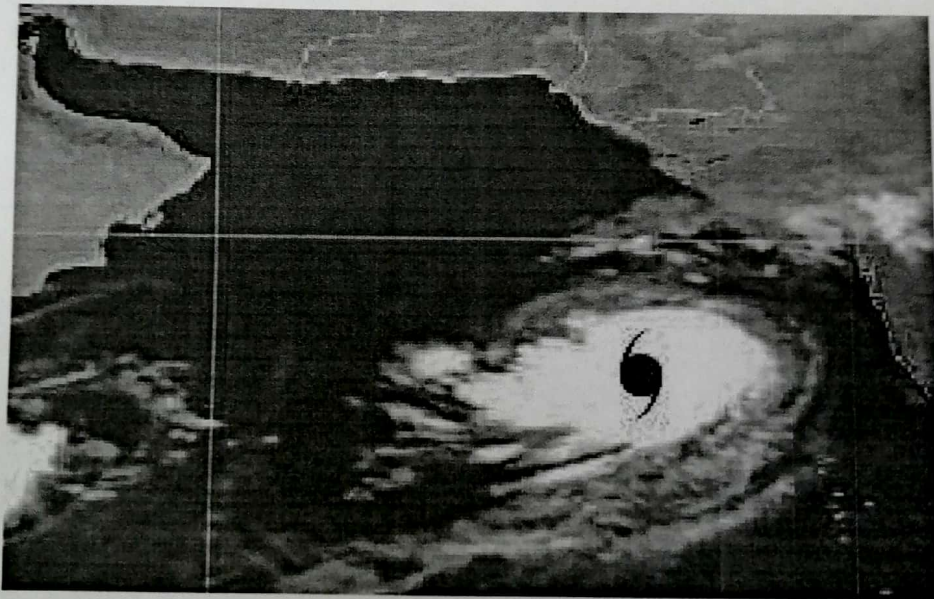
The Severe Cyclonic Storm "MAHA" over the eastcentral Arabian Sea has moved northwestwards during last 12 hours and located at 0800 PST of 2nd November 2019 around Lat 16.4 N and Long 68.3 E at a distance of about 940 km southeast of Karachi with maximum sustained surface winds of 90-110 kmph. TC-Maha is likely to intensify into a Very Severe Cyclonic Storm (VSCS) during next 12 hours, track further west/northwestwards for next two days and then recurve northeast towards Indian Gujarat.

Currently, there is no threat to Pakistan coastal area. However, fishermen are advised to remain careful and avoid into deep sea from Monday.

The Tropical Cyclone Warning Center of PMD is regularly monitoring the intensity and track of this Tropical Cyclone.

The concerned authorities are requested to keep them abreast of the system updates through PMD website.

IR Satellite imagery at 0900 PST



Issued By: Tropical Cyclone Warning Centre, Karachi

Advisory# 5

Issue Date: 2 November, 2019 11:48 AM

Cyclonic Storm MAHA in the South East Central Arabian Sea

Severe Cyclonic Storm MAHA in the Eastcentral Arabian Sea

The Severe Cyclonic Storm "MAHA" over the eastcentral Arabian Sea has moved northwestwards during last 12 hours and located at 2000 PST of 1st November 2019 around Lat 16.0 N and Long 69.0 E at a distance of about 1000 km southeast of Karachi with maximum sustained surface winds of 90-110 kmph. TC-Maha is likely to intensify into a Very Severe Cyclonic Storm (VSCS) during next 24 hours, track further west/northwestwards for next three days and then recurve towards northeast.